

SHORT-TERM CLASS A OFFICE SPACE AVAILABLE FOR LEASE



800 2nd Avenue South, St. Petersburg, Florida 33701
Downtown St. Petersburg Submarket

- Up to 40,595 RSF Office Space Available!
 - 1st Floor: 14,394 RSF
 - 2nd Floor: 13,173 RSF
 - 3rd Floor: 13,028 RSF
- **\$27.50 per RSF Full-Service Lease Start Rate.**
- Pure GROSS Rate with No Operating Expense Increases or Pass-Throughs.
- Free Surface Parking @ 2/1,000 RSF
- Building grounds have mature + well-manicured landscaping and foliage.
- Prime location in the heart of the vibrant downtown St. Petersburg CBD immediately off I-275 & with close proximity to County Courthouse, Post Office, main library, retail shops, hotels, restaurants, museums, Albert Whitted Airport, the Pier & the Marina.
- Located within 35 minutes of 85% of all households in the Tampa Bay Area, 800 2nd Avenue South is a quick drive from Clearwater, Tampa, west St. Petersburg, Sarasota, and Bradenton!

ECHELON

Echelon Real Estate Services, LLC
Licensed Real Estate Broker



For More Information Please Contact:

Michael S. Talmadge
mtalmadge@echelonre.com

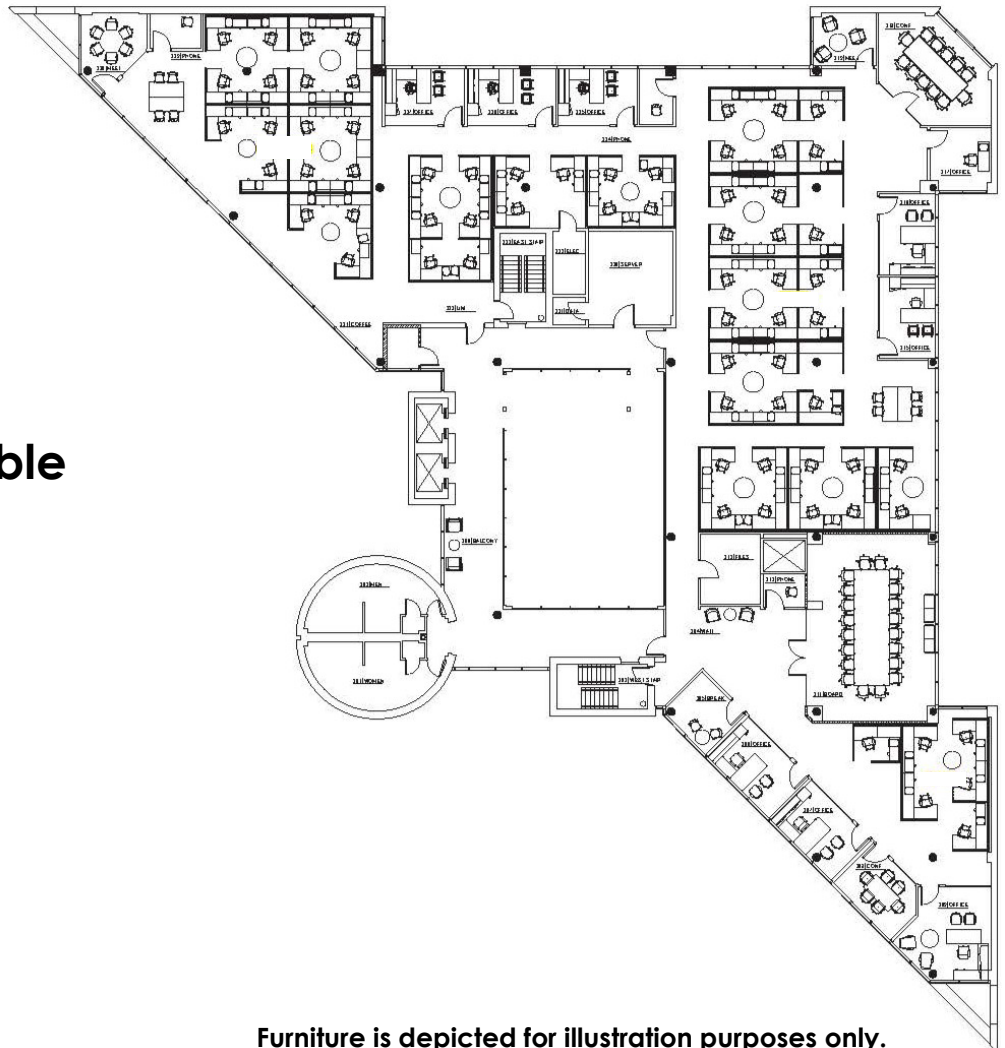
727.214.4650

www.eresproperties.com

SHORT-TERM CLASS A OFFICE SPACE AVAILABLE FOR LEASE



**2nd Floor Plan
13,173 RSF Available**



Furniture is depicted for illustration purposes only.

ECHELON

Echelon Real Estate Services, LLC
Licensed Real Estate Broker



For More Information Please Contact:

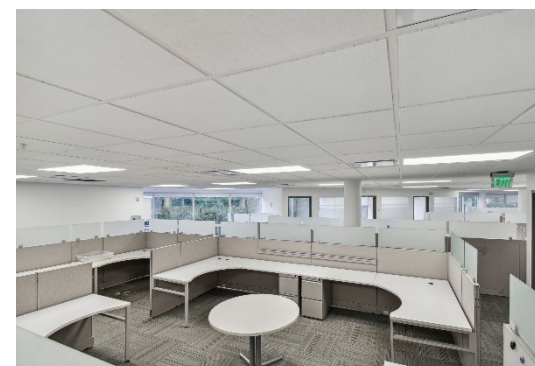
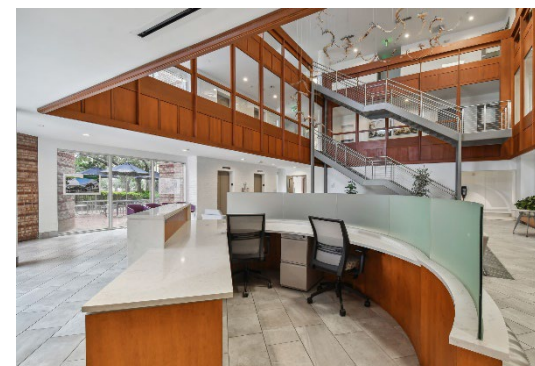
Michael S. Talmadge
mtalmadge@echelonre.com

727.214.4650

www.eresproperties.com

BUILDING PHOTOS

CLASS A OFFICE SPACE AVAILABLE FOR LEASE



ECHELON

Echelon Real Estate Services, LLC
Licensed Real Estate Broker



For More Information Please Contact:

Michael S. Talmadge
mtalmadge@echelonre.com

727.214.4650

www.eresproperties.com